



PARTNER UNIVERSITY FACT SHEET

Student exchange programmes

General information

➤ Name of institution & abbreviation	Universidad del País Vasco/ Euskal Herriko Unibertsitatea (UPV/EHU) University of the Basque Country
➤ Website	www.ehu.eus
➤ Erasmus code of institution	EBILBAO01
➤ OID	E10208839

International Relations Office (IRO)

➤ Address of IRO	International Relations Office Vice Rectorate for Basque, Culture and Internationalization Central library building, floor 2 Barrio Sarriena s/n 48940 Leioa, SPAIN internacional@ehu.eus
➤ Website for visiting students	www.ehu.eus/en/web/nazioarteko-harremanak/en-exchange-students

Agreements for students, teaching and staff exchange

Programme	Contact person	Contact data
International networking	Bryan Leferman Director for international mobility director.internacional@ehu.eus Tel: +34 946012165	Vice Rectorate for Basque, Culture and Internationalization Rectorate building Barrio Sarriena s/n 48940 Leioa, SPAIN Tel: +34 946012040
Outside ERASMUS+ (Latinamerca, USA, Canada, Russia, Asian countries)	Juan Carlos Castillo juancarlos.castillo@ehu.eus Tel: +34 94601 2166	International Relations Office Leioa Library building, floor 2 Barrio Sarriena s/n 48940 Leioa, SPAIN Tel: +34 6017903
SICUE (Exchanges among Spanish universities)	Irantzu Sologuren seneca@ehu.eus Tel: +34 946012089	
Erasmus + Bilateral agreements Staff exchange	Ms Idoia Ortiz de Landaluce agreements.internacional@ehu.eus staff.internacional@ehu.eus Tel: +34 943018136	International Relations Office Donostia-SS Ignacio M ^a Barriola Elhuyar Plaza, 1 20118 Donostia - San Sebastian

*Academic calendar

(*Further details on our academic calendar to be found on the website of the relevant faculty / school)

	Autumn/First semester	Spring/Secondsemester
➤ Lessons starting date	Early September	End of January
➤ Lessons end date	Mid January	Mid May
➤ Examinations period	January	May/June (retakes)

Application and registration procedures

Application documents	1. Copy of Passport/ID 2. Application form (downloaded from website) 3. Learning agreement proposal (a temporary form should be filled in prior to arrival; the final LA will be signed upon arrival at the University of the Basque Country)					
	ERASMUS+	The above mentioned documents should be handed in to the school/faculty coordinator at the University of the Basque Country https://www.ehu.eus/en/web/nazioarteko-harremanak/en-coordinators-contact				
	Outside ERASMUS+	All documents sent to: incoming.internacional@ehu.eus				
Online registration	Once processed the application the student will receive an invitation to an online registry that is required to issue the acceptance. www.ehu.eus/en/web/nazioarteko-harremanak/en-exchange-students					
UPV/EHU Registration	After arriving at the UPV/EHU, with the registration form, these documents will be delivered for registration: <table style="width: 100%; border: none;"> <tr> <td style="width: 50%;">1. Proof of Medical insurance</td> <td style="width: 50%;">3. Copy of passport/ID</td> </tr> <tr> <td>2. Copy of enrolment form at home university</td> <td>4. 3 passport-size photos</td> </tr> </table> Application forms: www.ehu.eus/en/web/nazioarteko-harremanak/en-exchange-students		1. Proof of Medical insurance	3. Copy of passport/ID	2. Copy of enrolment form at home university	4. 3 passport-size photos
1. Proof of Medical insurance	3. Copy of passport/ID					
2. Copy of enrolment form at home university	4. 3 passport-size photos					
For information regarding academic matters	Contact your academic coordinators at your faculty/school at the University of the Basque Country	List of coordinators: https://www.ehu.eus/en/web/nazioarteko-harremanak/en-coordinators-contact				

Courses at the University of the Basque Country

➤ Courses/programmes open to visiting students	- Visit website for the faculty/school you will be visiting. - Ask your academic coordinator at the department you will be visiting.
➤ Courses taught in English	Visit website: www.ehu.eus/en/web/nazioarteko-harremanak/en-coordinators-contact
➤ Study areas restricted to exchange students	Medical studies: check possibilities and restrictions with academic coordinator



Spanish and Basque courses for visitors

➤ Spanish and Basque courses	Fall:Septemberto December; Spring:JanuarytoMay Duration: Fall and Spring semesters Intensive Spanish course: late August Venue:Campusof Alava,Biscay& Gipuzkoa
➤ Further information	https://www.ehu.eus/en/web/nazioarteko-harremanak/en-available-courses

Cost of living

➤ Average monthly expenses (in euros)	Accommodation	350-500 euros
	Food	250-300 euros
	Transport	35 euros
	Academic material	--
	Miscellaneous	100 euros
	TOTAL/MONTH	735-935 euros

Accommodation for visiting students

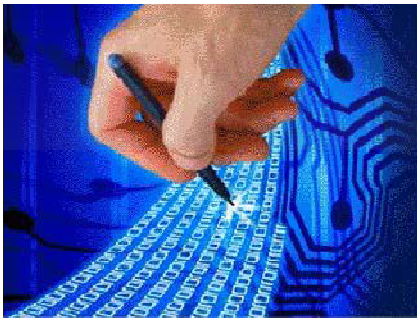
	Most visitors choose to live in shared, rented flats in the city centres or in family stays. There are also university and private student residences where visitors can settle.
➤ Who can help you? Help Centres	<p>Campus of Alava helpcentre1.internacional@ehu.eus University Pavillion; Los Apraiz 1 Vice Rectorate of the Campus of Alava Comandante Izarduy, 2 01006 Vitoria-Gasteiz Tel: +34 945 014334</p> <p>Campus of Biscay (Leioa) helpcentre2.internacional@ehu.eus Central Library building, floor 2 Barrio Sarriena s/n – 48940 Leioa-Erandio Tel: +34 946015868</p> <p>Campus of Biscay (Bilbao) helpcentre3.internacional@ehu.eus Higher Technical School of Engineering Desk P1G11 Pza Ingeniero Torres Quevedo 1, 48013 Bilbao Tel: +34 946017365</p> <p>Campus of Gipuzkoa (Donostia-San Sebastián) helpcentre4.internacional@ehu.eus Ignacio María Barriola building, floor 1 Plaza Elhuyar, 1 – 20018 Donostia-SS Tel: +34 943015192</p>
➤ Open: August to October; January to March	
➤ Uninterrupted online assistance	

Medical insurance

➤ Medical insurance

- **EU countries:** students need to get their European Health Card at country of origin.
- **Non EU countries:** visitors from outside Europe need to purchase a medical insurance in force throughout their stay at the University of the Basque Country.

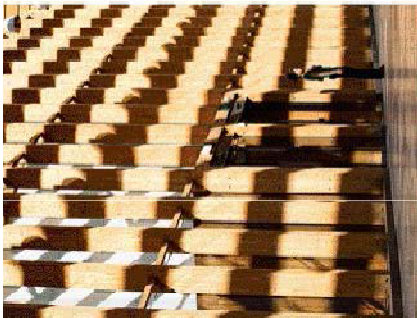
University of the Basque Country, photo gallery



Escuela de Ingeniería



Centro Carlos Santamaría



Vistasgenerales Area Leioa-Erandio

